



Choose up to 90% back on eligible veterinary bills!

## One simple plan for medical, wellness and emergency coverage

- Annual deductible
- Choose up to 90% back on eligible veterinary expenses<sup>1</sup>
- Veterinary exams, including wellness, specialty and emergency visits
- Preventive care, including vaccinations, teeth cleaning and spay/neuter
- Hospitalization and surgeries, including preventive and elective procedures
- Injuries and illnesses, including cancer and hereditary/congenital conditions
- Diagnostic testing, including X-rays, MRIs, CT scans and ultrasounds
- Prescribed nutritional supplements, therapeutic diets and medications
- No waiting period for hereditary/congenital conditions (after policy effective date)
- Prescribed holistic, alternative and preventive care
- ACL coverage after 1 year waiting period<sup>2</sup>

## What's not covered<sup>1</sup>

- Pre-existing conditions
- Non-veterinary fees (such as tax and waste disposal)
- Boarding/grooming

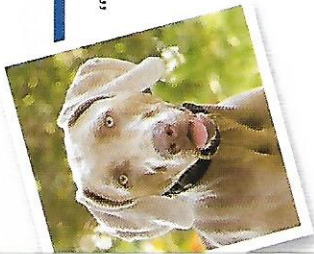


With Nationwide, you'll get more coverage than any other pet insurance plan on the market.

If it doesn't cover preventive care, it doesn't cover the whole pet.



- Choose up to 90% back on veterinary expenses<sup>1</sup>
- Keep seeing your own trusted veterinarian



“You guys have been with us the entire time and have stood behind us.”

— Pet parent of Senta,  
protected by Nationwide since 2017

### Here's a typical claim.<sup>†</sup>

When X-rays revealed plastic in Sofie's stomach and small intestine, Nationwide reimbursed her family for nearly the entire cost of the surgery.

### Foreign body ingestion

Veterinary bill: \$2,814



- Nationwide reimburses: \$2,308
- Client's net cost: \$506

Example reflects Whole Pet with Wellness plan with 90% reimbursement and \$250 annual deductible. Pet owner's net cost comprises \$250 annual deductible and 10% co-insurance (\$256).

Using your plan is  
easy as 1, 2, 3



Visit any vet, anywhere.



Submit your claim



Get reimbursed

1  
2  
3

It's that simple. Get a quote today!

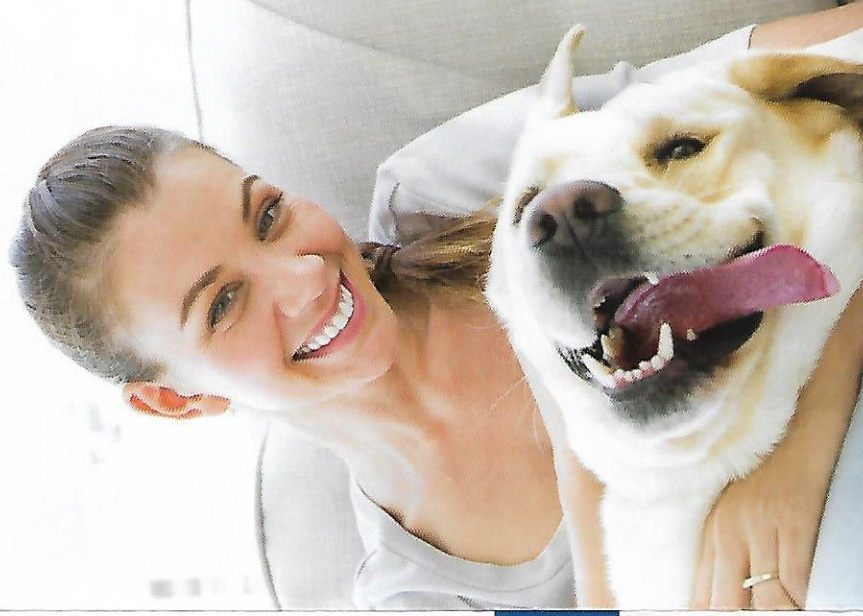
BestPetInsuranceEver.com • 800-672-9259



Nationwide<sup>®</sup>  
is on your side

Best.  
Pet insurance.  
Ever.<sup>SM</sup>

Simple, straightforward.  
Choose up to 90% back on  
eligible veterinary expenses.<sup>1</sup>  
Only from Nationwide.<sup>®</sup>



Nationwide<sup>®</sup>  
is on your side

BestPetInsuranceEver.com • 800-672-9259

<sup>1</sup>Some exclusions may apply. Certain coverages may be subject to pre-existing exclusion. See policy documents for a complete list of exclusions. Plans may not be available in all states. Policy eligibility may vary by state.  
<sup>2</sup>Cruelty, ligament and meniscal damage or rupture coverage begins after the first twelve (12) calendar months of the policy six (6) months in Georgia.  
Insurance terms, definitions and explanations are intended for informational purposes only and do not in any way replace or modify the definitions and information contained in individual insurance contracts, policies or declaration pages, which are controlling. Such terms and availability may vary by state and exclusions may apply. Underwritten by Veterinary Pet Insurance Company (CA), Columbus, OH; an A.M. Best "A" rated company (2018); National Casualty Company (all other states), Columbus, OH; an A.M. Best "A" rated company (2018); Agency of Record: DVM Insurance Agency, Nationwide, the Nationwide National Eagle, and Nationwide is on your side are service marks of Nationwide Mutual Insurance Company. ©2019 Nationwide. INWPCCONBROT19